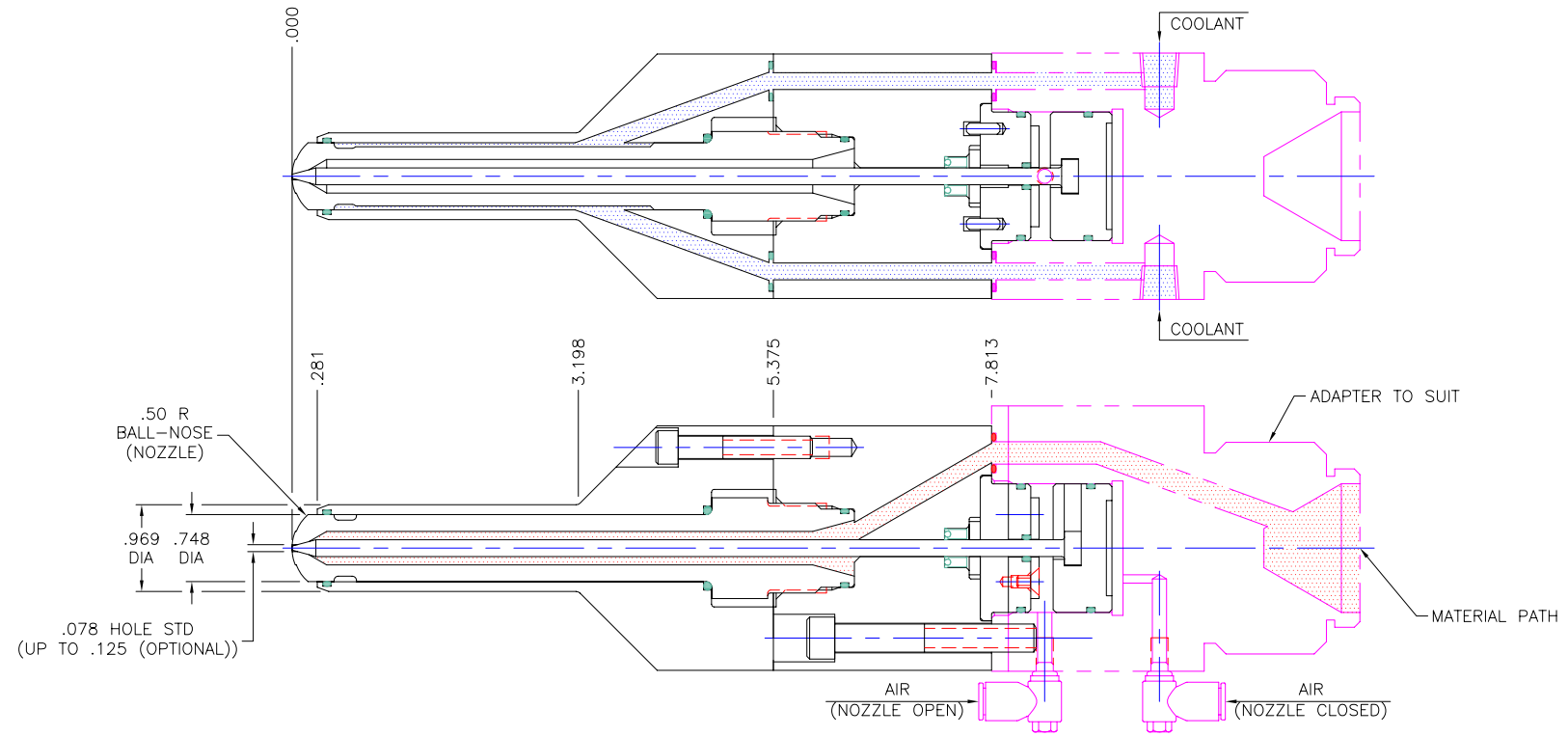
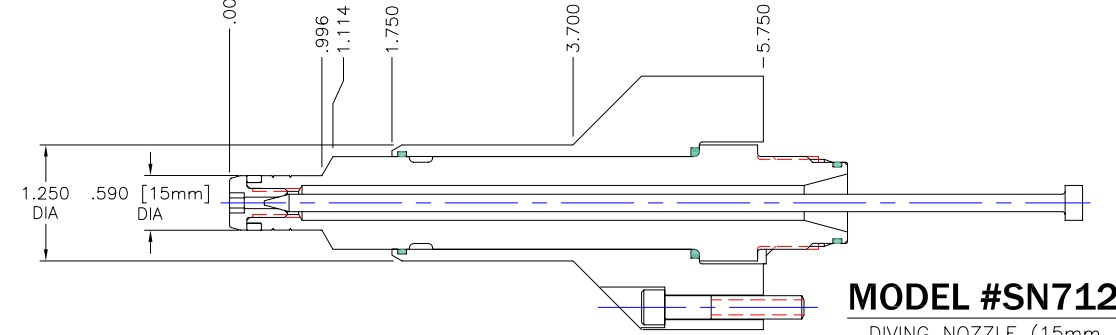


CHANGES	
WAS #SN71205M	3-4-05 J.M.
ADDED VS. SN712-6A & SN712-7A	5-16-05 J.M.
WAS #SN71210M	6-2-05 J.M.
ADDED VS. SN712-9A	6-30-05 J.M.
ADDED VS. SN712-8A	8-22-05 J.M.
OBSOLETE VS. SN712-2A, -5A & -7A	ADDED VS. SN712-10A & -11A.
5-17-06 J.M.	
ADDED VS. SN712-12A	1-17-12 J.M.



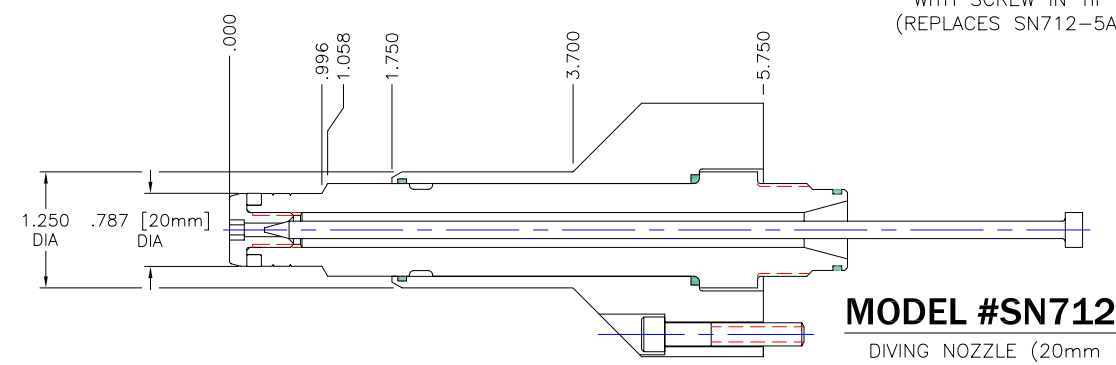
**MODEL #SN712-1A**

1/2" BALL NOSE NOZZLE (.750 DIA)  
STANDARD LENGTH



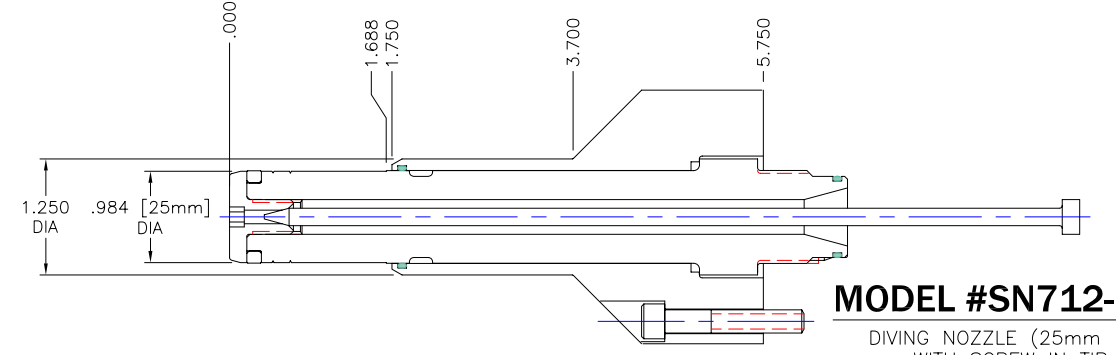
**MODEL #SN712-8A**

DIVING NOZZLE (15mm DIA)  
WITH SCREW IN TIP  
(REPLACES SN712-5A)



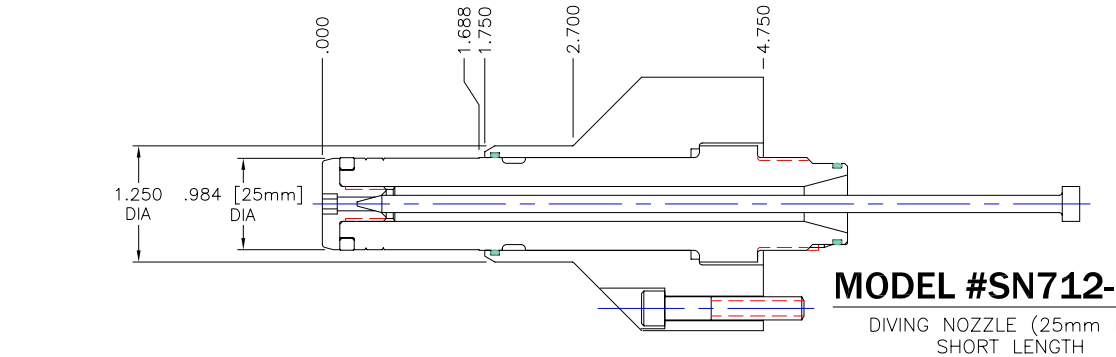
**MODEL #SN712-9A**

DIVING NOZZLE (20mm DIA)  
WITH SCREW IN TIP



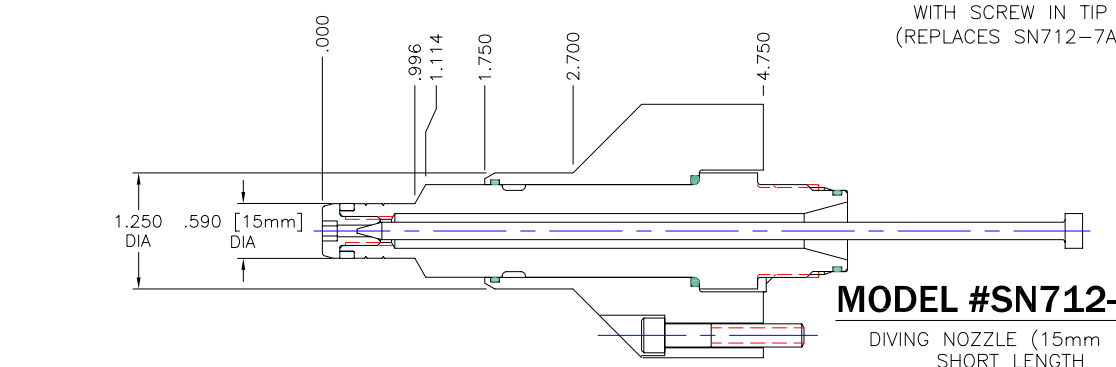
**MODEL #SN712-10A**

DIVING NOZZLE (25mm DIA)  
WITH SCREW IN TIP  
(REPLACES SN712-2A)



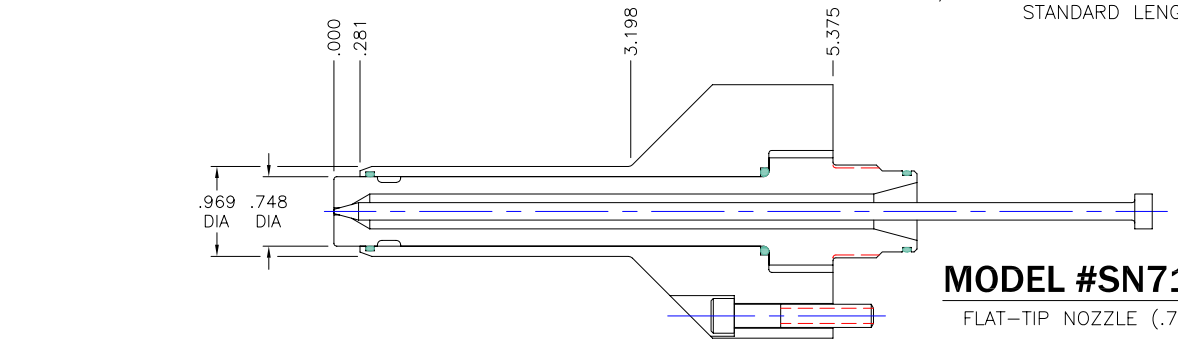
**MODEL #SN712-11A**

DIVING NOZZLE (25mm DIA)  
SHORT LENGTH  
WITH SCREW IN TIP  
(REPLACES SN712-7A)



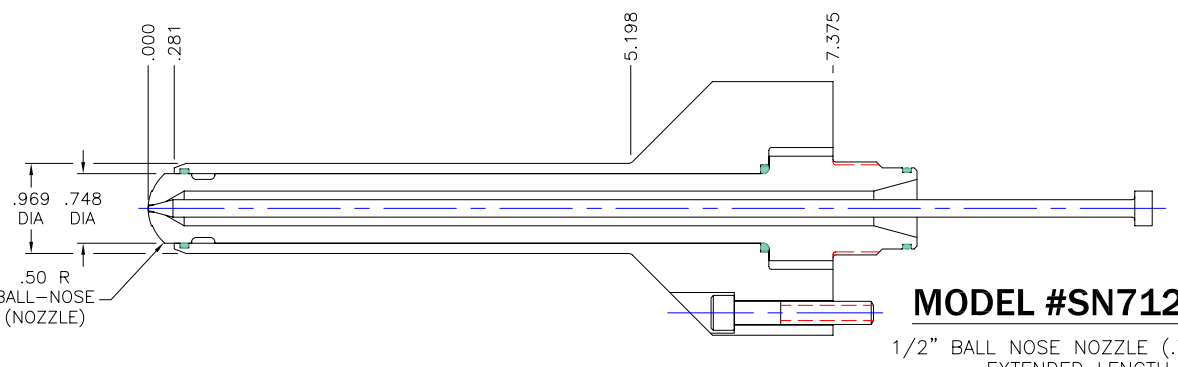
**MODEL #SN712-12A**

DIVING NOZZLE (15mm DIA)  
SHORT LENGTH  
WITH SCREW IN TIP



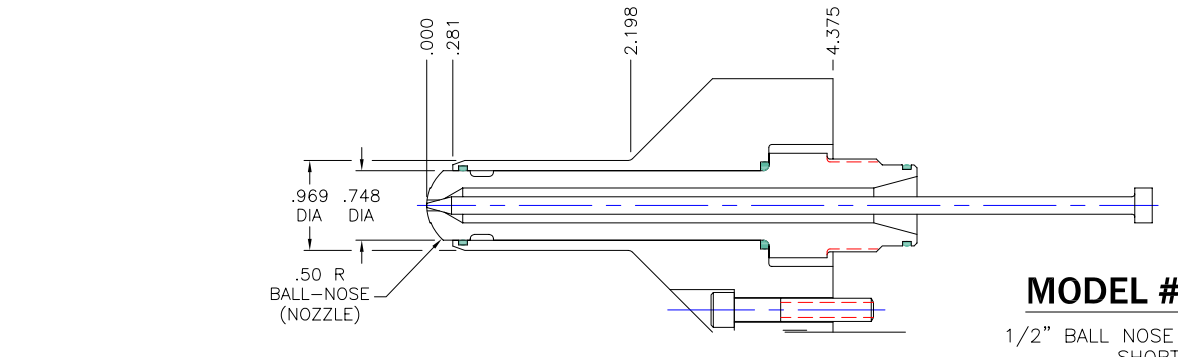
**MODEL #SN712-3A**

FLAT-TIP NOZZLE (.750 DIA)



**MODEL #SN712-4A**

1/2" BALL NOSE NOZZLE (.750 DIA)  
EXTENDED LENGTH



**MODEL #SN712-6A**

1/2" BALL NOSE NOZZLE (.750 DIA)  
SHORT LENGTH



DATE: 7-21-03	DES: J.M.	CHK'D: F.A.	SCALE: FULL
DESCRIPTION:		F.A.I. STANDARD MODEL #SN712 DUAL ACTING INJECTION NOZZLE	